

Royal Oak Dr between Pat Bay Hwy and Falaise Cres

October 21, 2019 To October 25, 2019



The data presented here is for information purposes only and should not be considered authoritative for construction, geotechnical, engineering, navigational, legal, or other site-specific uses. The information shared is owned by the Transportation Division of the Engineering Department at the District of Saanich. Accuracy is not guaranteed.

Start Date: 21-Oct-19
 Start Time: 0:00
 Station ID: M0030-03

Location 1: Royal Oak Dr between Pat Bay Hwy and Falaise Cres

Note:

DATE:	October 21, 2019		October 22, 2019		October 23, 2019		October 24, 2019		October 25, 2019		WK AVG		WK AVG	HOURLY
	MON		TUE		WED		THURS		FRI				CH 1+2	%
Time:	EB	WB	EB	WB	EB	WB	EB	WB	EB	WB	EB	WB		
12-1 AM			30	15	25	23	31	16			29	18	47	0.2%
1-2 AM			12	9	14	7	12	12			13	9	22	0.1%
2-3 AM			1	5	6	8	2	6			3	6	9	0.0%
3-4 AM			11	12	8	13	15	14			11	13	24	0.1%
4-5 AM			19	38	20	23	19	24			19	28	48	0.2%
5-6 AM			67	119	64	133	58	119			63	124	187	0.8%
6-7 AM			190	262	211	244	183	245			195	250	445	1.9%
7-8 AM			520	587	512	603	512	595			515	595	1110	4.8%
8-9 AM			769	882	812	899	804	903			795	895	1690	7.3%
9-10 AM			724	711	727	737	734	679			728	709	1437	6.2%
10-11 AM			736	703	764	720	796	681			765	701	1467	6.4%
11-12 PM			851	788	825	757	853	851			843	799	1642	7.1%
12-1 PM			838	753	843	870	830	847			837	823	1660	7.2%
1-2 PM			849	771	828	818	866	869			848	819	1667	7.2%
2-3 PM			868	892	908	914	926	971			901	926	1826	7.9%
3-4 PM			959	1069	957	1027	1011	1039			976	1045	2021	8.8%
4-5 PM			1028	983	971	938	1087	951			1029	957	1986	8.6%
5-6 PM			926	927	949	840	962	911			946	893	1838	8.0%
6-7 PM			679	642	644	625	681	707			668	658	1326	5.8%
7-8 PM			437	444	444	436	489	504			457	461	918	4.0%
8-9 PM			386	303	374	322	397	372			386	332	718	3.1%
9-10 PM			249	202	317	239	308	239			291	227	518	2.3%
10-11 PM			144	102	156	125	165	126			155	118	273	1.2%
11-12 AM			66	57	73	53	80	80			73	63	136	0.6%
LANES			11359	11276	11452	11374	11821	11761			11544	11470	23014	100.0%
TOTAL			22635		22826		23582				23020			
	MON		TUE		WED		THURS		FRI		WK AVG			

PEAK HOUR					TOTAL VEHICALS-PEAK PERIODS		2 HOUR PEAK INTERVALS				
MAX. 7 - 9 am PEAK HOUR	1690	⇒	7.3%	between 8-9 AM	9926	⇒	6 HR TOTAL	2 HR AM (7 - 9 AM)			
MAX. 7 - 11 am PEAK HOUR	1690	⇒	7.3%	between 8-9 AM	6624	⇒	4 HR TOTAL	VEH / HR	VEH / 2HR	2 HR %	
MAX. 11 am - 1 pm PEAK HOUR	1660	⇒	7.2%	between 12-1 PM				7-8 AM	1110	2799	12.2%
MAX. 11 am - 3 pm PEAK HOUR	1826	⇒	7.9%	between 2-3 PM				8-9 AM	1690		
MAX. 4 - 6 pm PEAK HOUR	1986	⇒	8.6%	between 4-5 PM				2 HR NOON (11 - 1 PM)			
MAX. 3 - 6 pm PEAK HOUR	2021	⇒	8.8%	between 3-4 PM				VEH / HR	VEH / 2HR	2 HR %	
								11-12 PM	1642	3302	14.3%
								12-1 PM	1660		
								2 HR PM (4 - 6 PM)			
								VEH / HR	VEH / 2HR	2 HR %	
								4-5 PM	1986	3824	16.6%
								5-6 PM	1838		

Royal Oak Dr between Pat Bay Hwy and Falaise Cres

Westbound

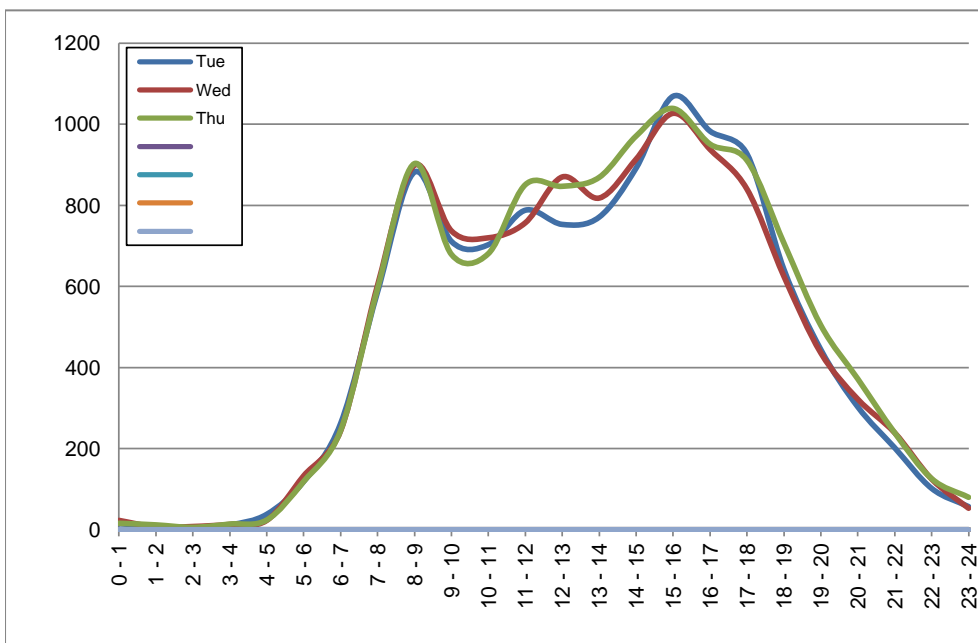
October 22, 2019 to October 24, 2019

Hourly Volumes

Time Period	Tue	Wed	Thu			
	Oct 22	Oct 23	Oct 24			
0 - 1	15	23	16			
1 - 2	9	7	12			
2 - 3	5	8	6			
3 - 4	12	13	14			
4 - 5	38	23	24			
5 - 6	119	133	119			
6 - 7	262	244	245			
7 - 8	587	603	595			
8 - 9	882	899	903			
9 - 10	711	737	679			
10 - 11	703	720	681			
11 - 12	788	757	851			
12 - 13	753	870	847			
13 - 14	771	818	869			
14 - 15	892	914	971			
15 - 16	1069	1027	1039			
16 - 17	983	938	951			
17 - 18	927	840	911			
18 - 19	642	625	707			
19 - 20	444	436	504			
20 - 21	303	322	372			
21 - 22	202	239	239			
22 - 23	102	125	126			
23 - 24	57	53	80			
Day Total	11276	11374	11761			

15-Minute Volumes

Time Start	Tue	Wed	Thu				Time Start	Tue	Wed	Thu			
	Oct 22	Oct 23	Oct 24					Oct 22	Oct 23	Oct 24			
0:00	4	8	3				12:00	195	213	238			
0:15	9	6	5				12:15	183	224	202			
0:30	0	4	8				12:30	187	196	195			
0:45	2	5	0				12:45	188	237	212			
1:00	2	3	4				13:00	188	176	225			
1:15	2	3	4				13:15	186	208	218			
1:30	4	0	3				13:30	217	201	208			
1:45	1	1	1				13:45	180	233	218			
2:00	2	1	5				14:00	198	238	248			
2:15	2	3	0				14:15	223	233	234			
2:30	1	3	0				14:30	231	196	223			
2:45	0	1	1				14:45	240	247	266			
3:00	1	1	3				15:00	292	265	262			
3:15	3	5	4				15:15	237	236	265			
3:30	2	3	3				15:30	269	254	242			
3:45	6	4	4				15:45	271	272	270			
4:00	6	3	4				16:00	249	245	251			
4:15	9	7	8				16:15	240	247	228			
4:30	12	4	3				16:30	234	253	250			
4:45	11	9	9				16:45	260	193	222			
5:00	21	19	16				17:00	235	212	206			
5:15	31	28	25				17:15	232	223	216			
5:30	32	40	43				17:30	232	215	257			
5:45	35	46	35				17:45	228	190	232			
6:00	39	38	35				18:00	177	193	201			
6:15	48	51	50				18:15	162	169	193			
6:30	90	83	74				18:30	150	138	139			
6:45	85	72	86				18:45	153	125	174			
7:00	101	105	109				19:00	109	129	111			
7:15	134	123	135				19:15	132	110	160			
7:30	187	175	165				19:30	112	96	116			
7:45	165	200	186				19:45	91	101	117			
8:00	246	205	202				20:00	84	86	123			
8:15	189	196	221				20:15	80	89	91			
8:30	182	244	236				20:30	74	88	72			
8:45	265	254	244				20:45	65	59	86			
9:00	186	193	166				21:00	59	84	67			
9:15	157	176	163				21:15	69	42	79			
9:30	181	196	149				21:30	43	67	50			
9:45	187	172	201				21:45	31	46	43			
10:00	181	178	207				22:00	41	52	39			
10:15	169	185	141				22:15	18	28	30			
10:30	183	181	164				22:30	28	24	27			
10:45	170	176	169				22:45	15	21	30			
11:00	173	193	197				23:00	26	29	38			
11:15	186	168	216				23:15	14	8	12			
11:30	194	180	215				23:30	13	9	16			
11:45	235	216	223				23:45	4	7	14			



Site notes:

Royal Oak Dr between Pat Bay Hwy and Falaise Cres

Eastbound

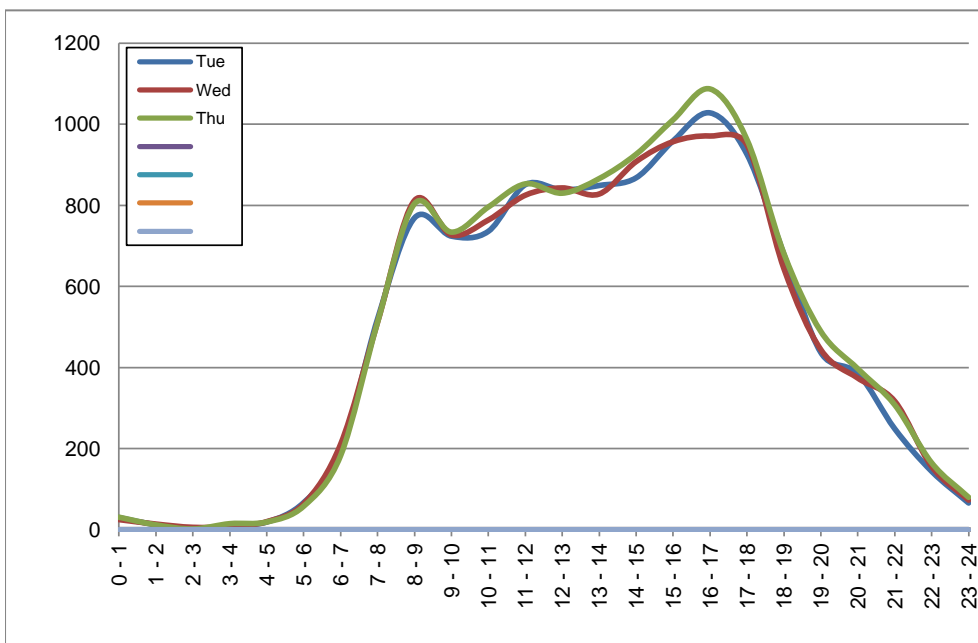
October 22, 2019 to October 24, 2019

Hourly Volumes

Time Period	Tue	Wed	Thu			
	Oct 22	Oct 23	Oct 24			
0 - 1	30	25	31			
1 - 2	12	14	12			
2 - 3	1	6	2			
3 - 4	11	8	15			
4 - 5	19	20	19			
5 - 6	67	64	58			
6 - 7	190	211	183			
7 - 8	520	512	512			
8 - 9	769	812	804			
9 - 10	724	727	734			
10 - 11	736	764	796			
11 - 12	851	825	853			
12 - 13	838	843	830			
13 - 14	849	828	866			
14 - 15	868	908	926			
15 - 16	959	957	1011			
16 - 17	1028	971	1087			
17 - 18	926	949	962			
18 - 19	679	644	681			
19 - 20	437	444	489			
20 - 21	386	374	397			
21 - 22	249	317	308			
22 - 23	144	156	165			
23 - 24	66	73	80			
Day Total	11359	11452	11821			

15-Minute Volumes

Time Start	Tue	Wed	Thu				Time Start	Tue	Wed	Thu			
	Oct 22	Oct 23	Oct 24					Oct 22	Oct 23	Oct 24			
0:00	14	7	9				12:00	214	198	189			
0:15	7	6	8				12:15	197	215	226			
0:30	6	9	7				12:30	212	235	220			
0:45	3	3	7				12:45	215	195	195			
1:00	7	4	5				13:00	165	212	196			
1:15	2	3	5				13:15	227	209	213			
1:30	2	3	2				13:30	227	207	238			
1:45	1	4	0				13:45	230	200	219			
2:00	1	2	2				14:00	210	210	212			
2:15	0	1	0				14:15	205	239	248			
2:30	0	1	0				14:30	222	237	219			
2:45	0	2	0				14:45	231	222	247			
3:00	2	2	4				15:00	217	211	229			
3:15	1	0	1				15:15	240	239	277			
3:30	4	4	4				15:30	237	240	233			
3:45	4	2	6				15:45	265	267	272			
4:00	3	1	3				16:00	243	248	254			
4:15	4	3	4				16:15	259	241	248			
4:30	3	7	5				16:30	287	255	279			
4:45	9	9	7				16:45	239	227	306			
5:00	8	9	6				17:00	261	267	245			
5:15	21	8	17				17:15	223	266	264			
5:30	13	26	13				17:30	251	208	249			
5:45	25	21	22				17:45	191	208	204			
6:00	29	28	25				18:00	178	148	176			
6:15	37	39	39				18:15	167	168	194			
6:30	48	49	44				18:30	176	165	166			
6:45	76	95	75				18:45	158	163	145			
7:00	95	80	94				19:00	128	107	151			
7:15	111	115	106				19:15	125	131	118			
7:30	127	133	125				19:30	106	105	102			
7:45	187	184	187				19:45	78	101	118			
8:00	208	204	200				20:00	113	102	104			
8:15	197	211	219				20:15	105	105	117			
8:30	173	198	185				20:30	81	100	85			
8:45	191	199	200				20:45	87	67	91			
9:00	182	201	209				21:00	81	78	97			
9:15	194	157	178				21:15	64	101	74			
9:30	168	174	165				21:30	52	76	68			
9:45	180	195	182				21:45	52	62	69			
10:00	173	200	168				22:00	53	52	50			
10:15	182	185	186				22:15	33	33	32			
10:30	185	179	212				22:30	25	34	39			
10:45	196	200	230				22:45	33	37	44			
11:00	161	199	211				23:00	26	28	30			
11:15	200	209	222				23:15	13	16	21			
11:30	251	215	216				23:30	13	14	12			
11:45	239	202	204				23:45	14	15	17			



Site notes:

Vehicle Speed Summary

Saanich Engineering Department

Count Id: [M0030-03](#)

Filename: [Royal Oak Dr between Pat Bay Hwy and Falaise Cres-Oct-2019.xlsm](#)

Location: Royal Oak Dr between Pat Bay Hwy and Falaise Cres

Note:

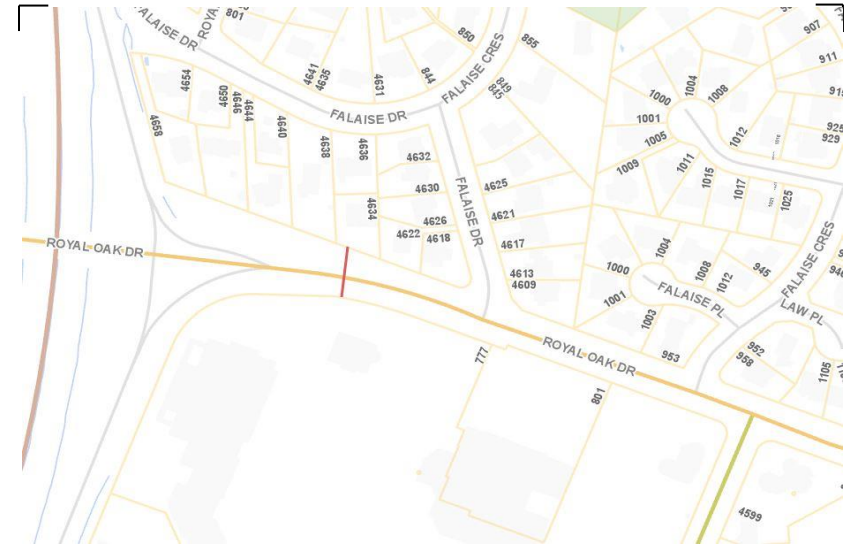
Direction: **East-West**

Dates: **October 21, 2019 To October 25, 2019**

Filtered data

AVG. SPEED	26 mph	42 km/h
50 % SPEED	27 mph	43 km/h
85 % SPEED	32 mph	51 km/h
95 % SPEED	35 mph	56 km/h

Location Map



Royal Oak Dr between Pat Bay Hwy and Falaise Cres

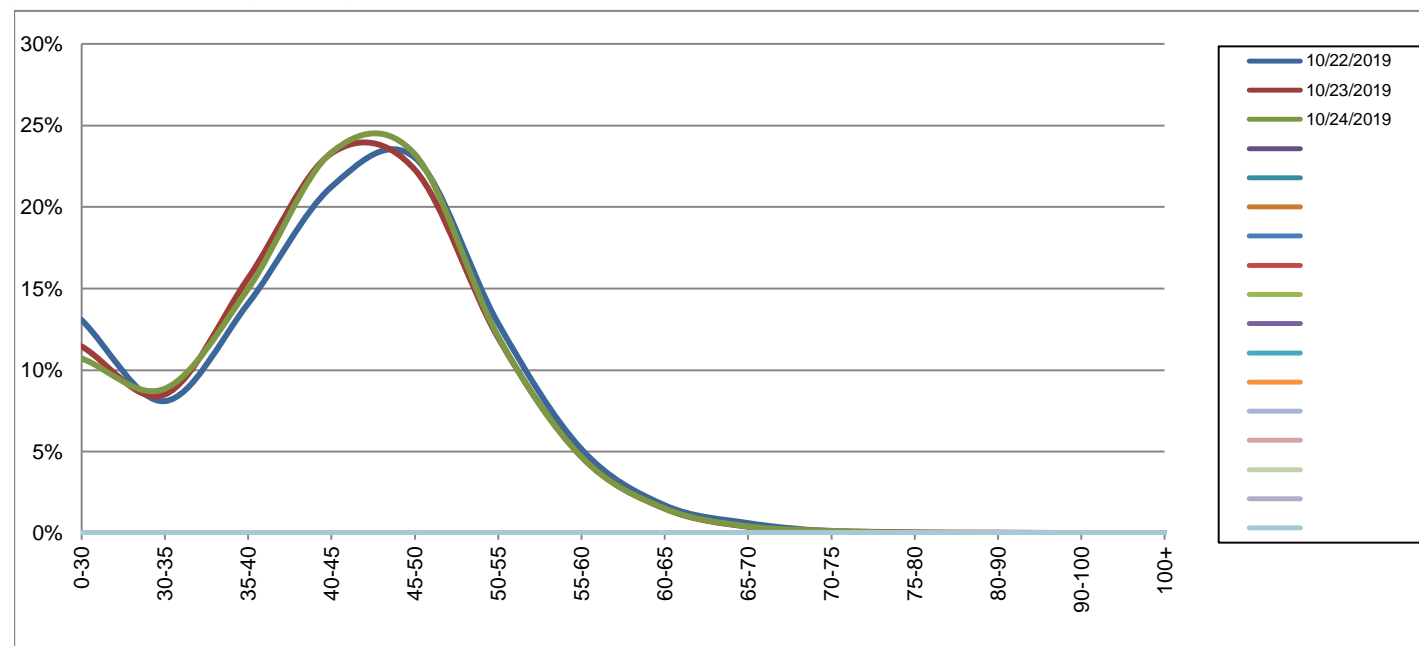
Westbound

October 22, 2019 to October 24, 2019

Daily Speed Bin Percentages															Daily Speed Bin Volumes														Total	Avg.
Bin #	1	2	3	4	5	6	7	8	9	10	11	12	13	14	1	2	3	4	5	6	7	8	9	10	11	12	13	14	Volume	Speed
Bin Speeds	0-30	30-35	35-40	40-45	45-50	50-55	55-60	60-65	65-70	70-75	75-80	80-90	90-100	100+	0-30	30-35	35-40	40-45	45-50	50-55	55-60	60-65	65-70	70-75	75-80	80-90	90-100	100+		
10/22/2019	13.1%	8.1%	14.1%	21.2%	23.0%	12.9%	5.2%	1.7%	0.6%	0.1%	0.0%	0.0%	0.0%	0.0%	1474	913	1588	2395	2596	1451	581	193	70	13	2	0	0	0	11276	41
10/23/2019	11.5%	8.5%	15.6%	23.3%	22.3%	12.0%	4.7%	1.5%	0.4%	0.1%	0.1%	0.0%	0.0%	0.0%	1303	967	1779	2649	2535	1363	534	171	45	16	6	4	1	1	11374	41
10/24/2019	10.7%	8.9%	15.0%	23.3%	23.2%	12.1%	4.7%	1.5%	0.4%	0.1%	0.0%	0.0%	0.0%	0.0%	1260	1042	1763	2746	2733	1419	550	178	49	17	3	1	0	0	11761	41
Total	11.7%	8.5%	14.9%	22.6%	22.9%	12.3%	4.8%	1.6%	0.5%	0.1%	0.0%	0.0%	0.0%	0.0%	4037	2922	5130	7790	7864	4233	1665	542	164	46	11	5	1	1	34411	41

Speed Data Summary

Bin #	1	2	3	4	5	6	7	8	9	10	11	12	13	14	Total
Bin Speeds	0-30	30-35	35-40	40-45	45-50	50-55	55-60	60-65	65-70	70-75	75-80	80-90	90-100	100+	
Survey Total	4037	2922	5130	7790	7864	4233	1665	542	164	46	11	5	1	1	34411
% Total	11.7%	8.5%	14.9%	22.6%	22.9%	12.3%	4.8%	1.6%	0.5%	0.1%	0.0%	0.0%	0.0%	0.0%	100%
Accumulated %	11.7%	20.2%	35.1%	57.8%	80.6%	92.9%	97.8%	99.3%	99.8%	99.9%	100.0%	100.0%	100.0%	100%	
Inverse Accum. %	88.3%	79.8%	64.9%	42.2%	19.4%	7.1%	2.2%	0.7%	0.2%	0.1%	0.0%	0.0%	0.0%	0.0%	
Average Speed	41 KM/H														



Site notes:

Royal Oak Dr between Pat Bay Hwy and Falaise Cres

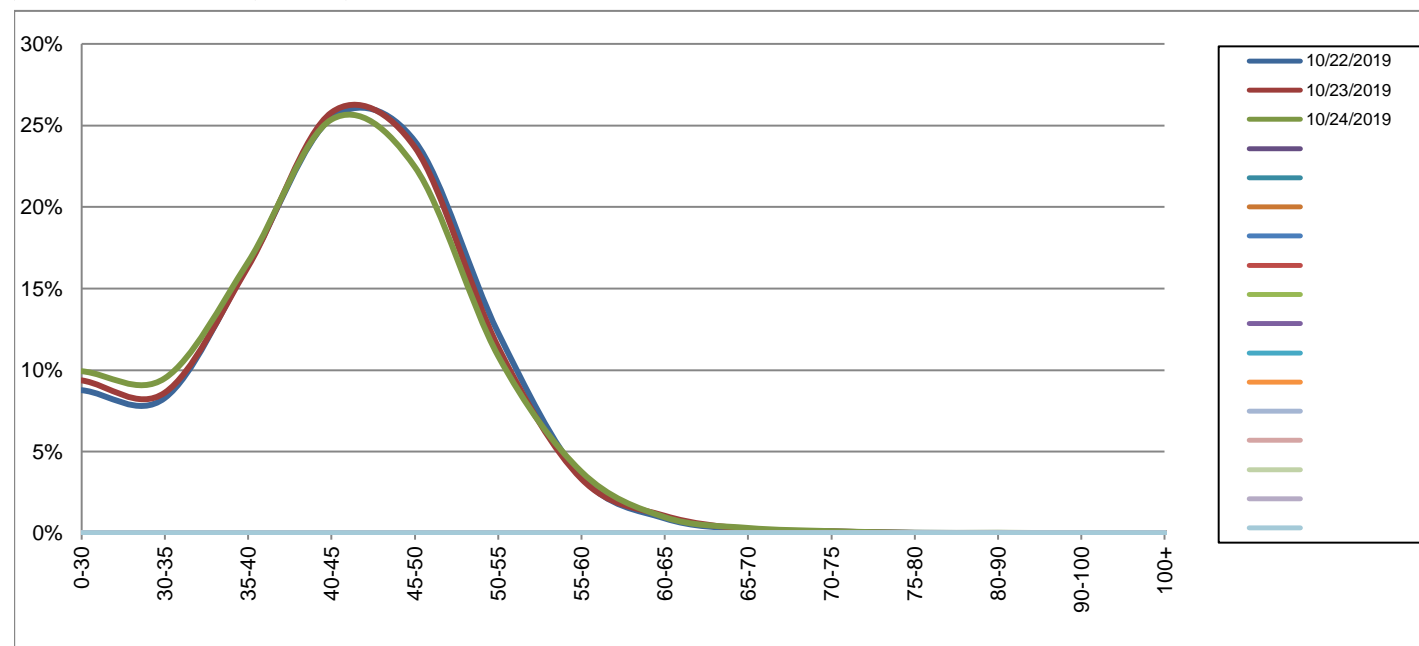
Eastbound

October 22, 2019 to October 24, 2019

Daily Speed Bin Percentages															Daily Speed Bin Volumes														Total	Avg.
Bin #	1	2	3	4	5	6	7	8	9	10	11	12	13	14	1	2	3	4	5	6	7	8	9	10	11	12	13	14	Volume	Speed
Bin Speeds	0-30	30-35	35-40	40-45	45-50	50-55	55-60	60-65	65-70	70-75	75-80	80-90	90-100	100+	0-30	30-35	35-40	40-45	45-50	50-55	55-60	60-65	65-70	70-75	75-80	80-90	90-100	100+		
10/22/2019	8.8%	8.3%	16.4%	25.5%	24.0%	12.3%	3.4%	0.9%	0.2%	0.1%	0.0%	0.0%	0.0%	0.0%	996	942	1868	2891	2730	1396	391	103	25	12	3	2	0	0	11359	42
10/23/2019	9.4%	8.6%	16.4%	25.8%	23.7%	11.4%	3.3%	1.1%	0.3%	0.1%	0.0%	0.0%	0.0%	0.0%	1073	987	1873	2954	2710	1307	381	122	29	13	2	1	0	0	11452	41
10/24/2019	9.9%	9.5%	16.6%	25.4%	22.5%	10.9%	3.8%	1.0%	0.3%	0.1%	0.0%	0.0%	0.0%	0.0%	1174	1123	1966	2998	2655	1285	445	116	38	15	3	3	0	0	11821	41
Total	9.4%	8.8%	16.5%	25.5%	23.4%	11.5%	3.5%	1.0%	0.3%	0.1%	0.0%	0.0%	0.0%	0.0%	3243	3052	5707	8843	8095	3988	1217	341	92	40	8	6	0	0	34632	41

Speed Data Summary

Bin #	1	2	3	4	5	6	7	8	9	10	11	12	13	14	Total
Bin Speeds	0-30	30-35	35-40	40-45	45-50	50-55	55-60	60-65	65-70	70-75	75-80	80-90	90-100	100+	
Survey Total	3243	3052	5707	8843	8095	3988	1217	341	92	40	8	6	0	0	34632
% Total	9.4%	8.8%	16.5%	25.5%	23.4%	11.5%	3.5%	1.0%	0.3%	0.1%	0.0%	0.0%	0.0%	0.0%	100%
Accumulated %	9.4%	18.2%	34.7%	60.2%	83.6%	95.1%	98.6%	99.6%	99.8%	100.0%	100.0%	100.0%	100.0%	100%	
Inverse Accum. %	90.6%	81.8%	65.3%	39.8%	16.4%	4.9%	1.4%	0.4%	0.2%	0.0%	0.0%	0.0%	0.0%	0.0%	
Average Speed	41 KM/H														



Site notes:

Royal Oak Dr between Pat Bay Hwy and Falaise Cres

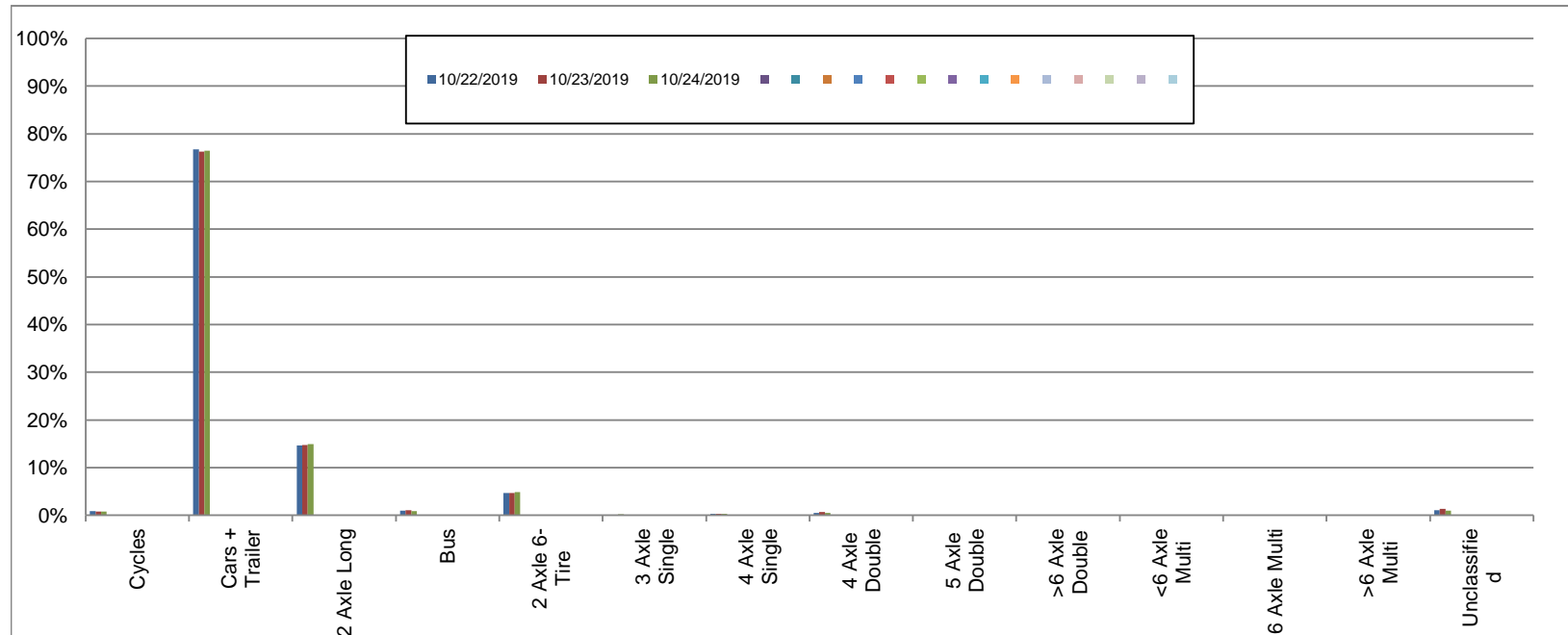
Westbound

October 22, 2019 to October 24, 2019

Daily Class Bin Percentages															Daily Class Bin Volumes														
Bin #	1	2	3	4	5	6	7	8	9	10	11	12	13	14	1	2	3	4	5	6	7	8	9	10	11	12	13	14	Total Volume
Bin Class	Cycles	Cars + Trailer	2 Axle Long	Bus	2 Axle 6-Tire	3 Axle Single	4 Axle Single	4 Axle Double	5 Axle Double	>6 Axle Double	<6 Axle Multi	6 Axle Multi	>6 Axle Multi	Unclassified	Cycles	Cars + Trailer	2 Axle Long	Bus	2 Axle 6-Tire	3 Axle Single	4 Axle Single	4 Axle Double	5 Axle Double	>6 Axle Double	<6 Axle Multi	6 Axle Multi	>6 Axle Multi	Unclassified	
10/22/2019	0.9%	76.7%	14.7%	0.9%	4.7%	0.1%	0.3%	0.5%	0.1%	0.0%	0.0%	0.0%	0.0%	1.1%	103	8654	1653	104	531	13	29	54	7	3	1	0	0	124	11276
10/23/2019	0.8%	76.3%	14.7%	1.0%	4.7%	0.1%	0.3%	0.7%	0.1%	0.0%	0.0%	0.0%	0.0%	1.4%	87	8674	1671	118	531	16	31	77	7	3	2	1	1	155	11374
10/24/2019	0.8%	76.5%	14.9%	0.9%	4.9%	0.2%	0.3%	0.5%	0.1%	0.0%	0.0%	0.0%	0.0%	1.0%	89	8998	1751	107	573	22	34	63	8	2	0	1	0	113	11761
Total	0.8%	76.5%	14.7%	1.0%	4.8%	0.1%	0.3%	0.6%	0.1%	0.0%	0.0%	0.0%	0.0%	1.1%	279	26326	5075	329	1635	51	94	194	22	8	3	2	1	392	34411

Class Data Summary

Bin #	1	2	3	4	5	6	7	8	9	10	11	12	13	14	Total Volume
Bin Class	Cycles	Cars + Trailer	2 Axle Long	Bus	2 Axle 6-Tire	3 Axle Single	4 Axle Single	4 Axle Double	5 Axle Double	>6 Axle Double	<6 Axle Multi	6 Axle Multi	>6 Axle Multi	Unclassified	Total Volume
Survey Total	279	26326	5075	329	1635	51	94	194	22	8	3	2	1	392	34411
% Total	0.8%	76.5%	14.7%	1.0%	4.8%	0.1%	0.3%	0.6%	0.1%	0.0%	0.0%	0.0%	0.0%	1.1%	100%
Accumulated %	0.8%	77.3%	92.1%	93.0%	97.8%	97.9%	98.2%	98.8%	98.8%	98.8%	98.9%	98.9%	98.9%	100.0%	
Inv. Accum. %	99.2%	22.7%	7.9%	7.0%	2.2%	2.1%	1.8%	1.2%	1.2%	1.2%	1.1%	1.1%	1.1%	0.0%	



Classification Descriptions

Bin #	Bin Description
1	Motorcycles
2	Passenger cars, including those with recreational trailers
3	2-axle pick-ups, vans, and RVs, including those with recreational trailers
4	Buses
5	2-axle, 6-tire single units
6	3-axle single units
7	4-axle single units
8	3-axle or 4-axle double unit
9	5-axle double unit
10	6-, 7-, or 8-axle double unit
11	5-axle multiple unit
12	6-axle multiple unit
13	7-or-more-axle multiple unit
14	Vehicles that could not be classified

Site notes:

Royal Oak Dr between Pat Bay Hwy and Falaise Cres

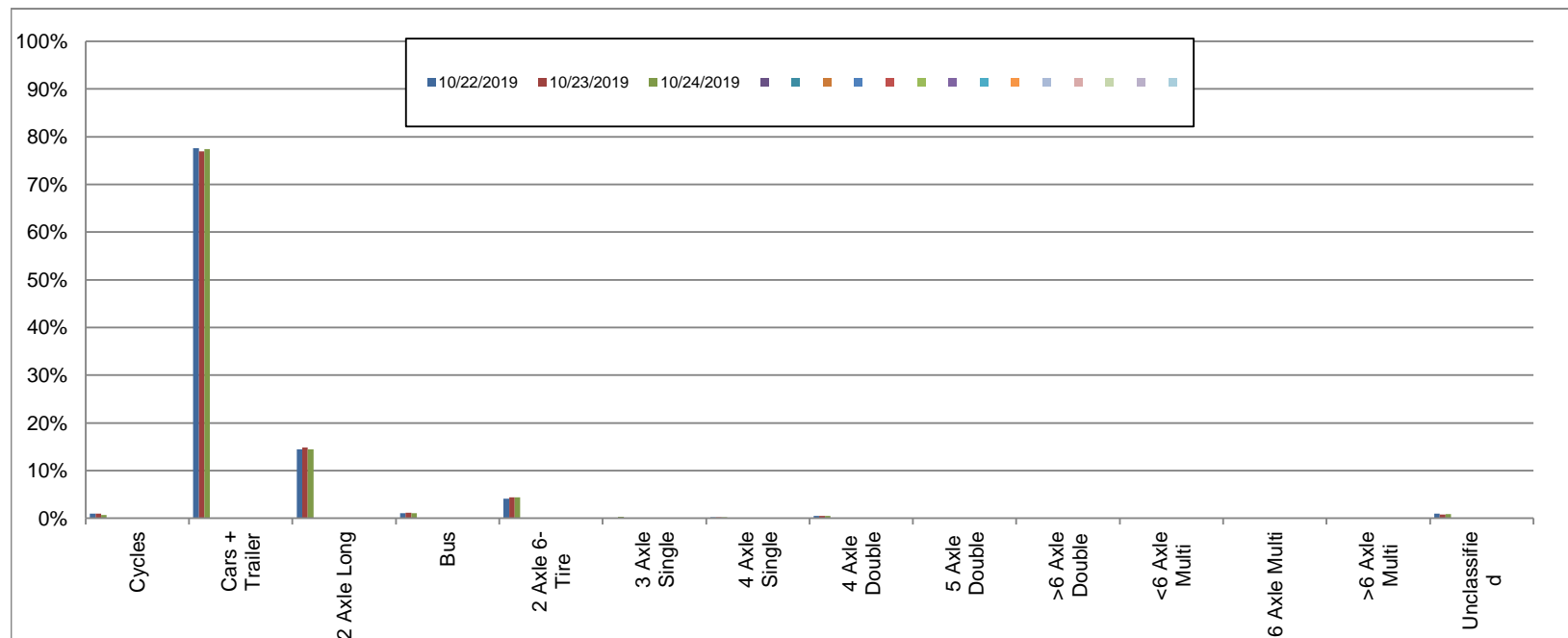
Eastbound

October 22, 2019 to October 24, 2019

Daily Class Bin Percentages															Daily Class Bin Volumes														
Bin #	1	2	3	4	5	6	7	8	9	10	11	12	13	14	1	2	3	4	5	6	7	8	9	10	11	12	13	14	Total Volume
Bin Class	Cycles	Cars + Trailer	2 Axle Long	Bus	2 Axle 6-Tire	3 Axle Single	4 Axle Single	4 Axle Double	5 Axle Double	>6 Axle Double	<6 Axle Multi	6 Axle Multi	>6 Axle Multi	Unclassified	Cycles	Cars + Trailer	2 Axle Long	Bus	2 Axle 6-Tire	3 Axle Single	4 Axle Single	4 Axle Double	5 Axle Double	>6 Axle Double	<6 Axle Multi	6 Axle Multi	>6 Axle Multi	Unclassified	
10/22/2019	1.0%	77.6%	14.4%	1.0%	4.1%	0.1%	0.2%	0.4%	0.1%	0.0%	0.0%	0.0%	0.0%	1.0%	108	8813	1641	118	467	14	23	51	8	4	0	0	0	112	11359
10/23/2019	0.9%	77.0%	14.8%	1.1%	4.4%	0.2%	0.2%	0.5%	0.1%	0.0%	0.0%	0.0%	0.0%	0.8%	108	8815	1697	130	503	18	24	54	6	2	1	0	0	94	11452
10/24/2019	0.7%	77.5%	14.4%	1.1%	4.4%	0.3%	0.2%	0.5%	0.0%	0.0%	0.0%	0.0%	0.0%	0.9%	84	9156	1707	125	522	32	24	54	4	4	2	1	0	106	11821
Total	0.9%	77.3%	14.6%	1.1%	4.3%	0.2%	0.2%	0.5%	0.1%	0.0%	0.0%	0.0%	0.0%	0.9%	300	26784	5045	373	1492	64	71	159	18	10	3	1	0	312	34632

Class Data Summary

Bin #	1	2	3	4	5	6	7	8	9	10	11	12	13	14	Total Volume
Bin Class	Cycles	Cars + Trailer	2 Axle Long	Bus	2 Axle 6-Tire	3 Axle Single	4 Axle Single	4 Axle Double	5 Axle Double	>6 Axle Double	<6 Axle Multi	6 Axle Multi	>6 Axle Multi	Unclassified	Total Volume
Survey Total	300	26784	5045	373	1492	64	71	159	18	10	3	1	0	312	34632
% Total	0.9%	77.3%	14.6%	1.1%	4.3%	0.2%	0.2%	0.5%	0.1%	0.0%	0.0%	0.0%	0.0%	0.9%	100%
Accumulated %	0.9%	78.2%	92.8%	93.8%	98.2%	98.3%	98.5%	99.0%	99.1%	99.1%	99.1%	99.1%	99.1%	100.0%	
Inv. Accum. %	99.1%	21.8%	7.2%	6.2%	1.8%	1.7%	1.5%	1.0%	0.9%	0.9%	0.9%	0.9%	0.9%	0.0%	



Classification Descriptions

Bin #	Bin Description
1	Motorcycles
2	Passenger cars, including those with recreational trailers
3	2-axle pick-ups, vans, and RVs, including those with recreational trailers
4	Buses
5	2-axle, 6-tire single units
6	3-axle single units
7	4-axle single units
8	3-axle or 4-axle double unit
9	5-axle double unit
10	6-, 7-, or 8-axle double unit
11	5-axle multiple unit
12	6-axle multiple unit
13	7-or-more-axle multiple unit
14	Vehicles that could not be classified

Site notes: